



Appendix A4

Functional Process Diagrams Family Case Management



1.6 Family Case Management Process

The Family case management process is based primarily on the work accomplished by the Family Court Steering Committee's Case Management Subcommittee regarding Domestic Relations and Domestic Violence. The process flow diagrams in this section are comprised of:

- ≈≈ Domestic Relations
- ≈≈ Domestic Violence, Repeat Violence, & Date Violence
- ≈≈ Children/Families In Need of Services (CINS/FINS)

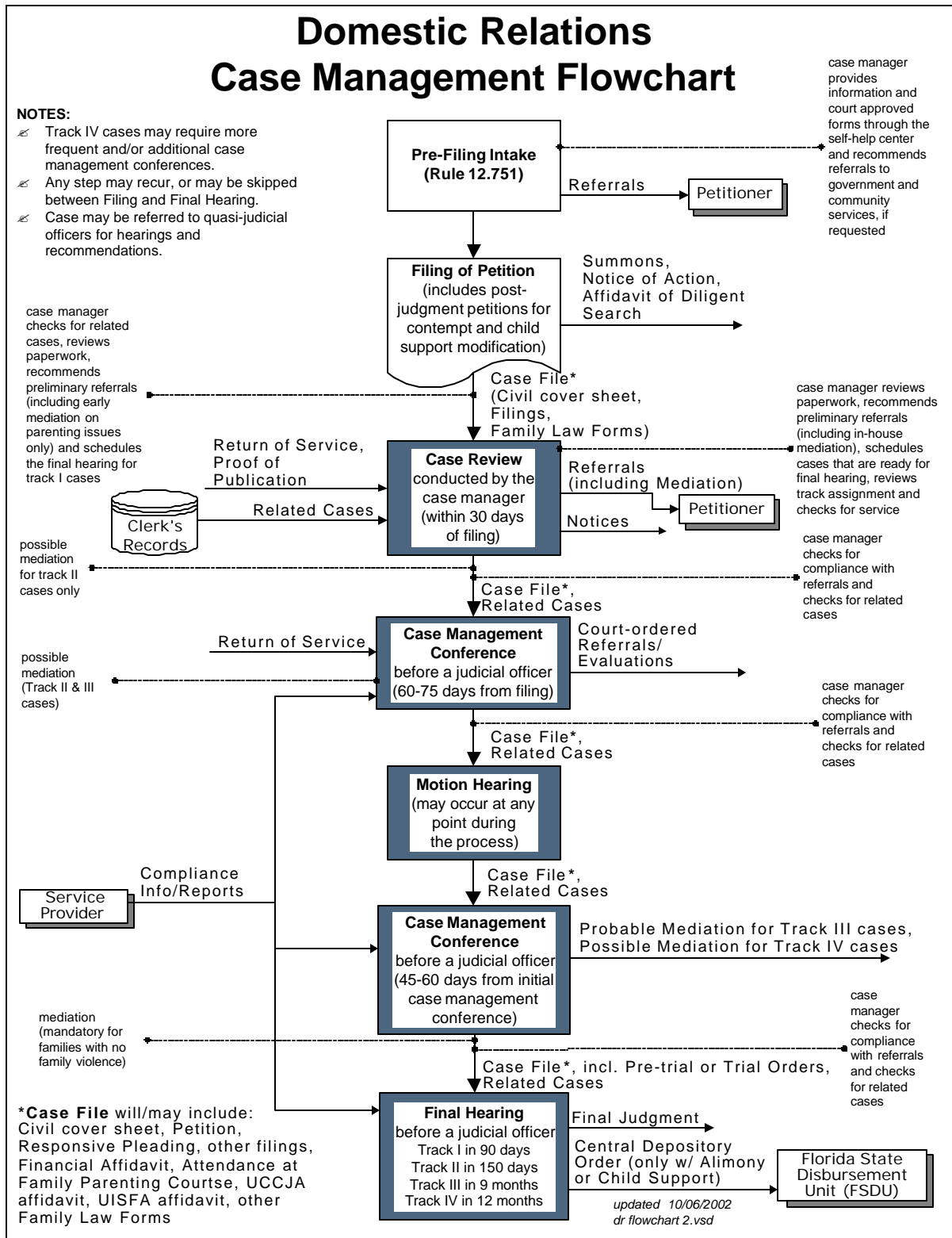


Figure A-30. Domestic Relations



CINS/FINS Case Management Flowchart

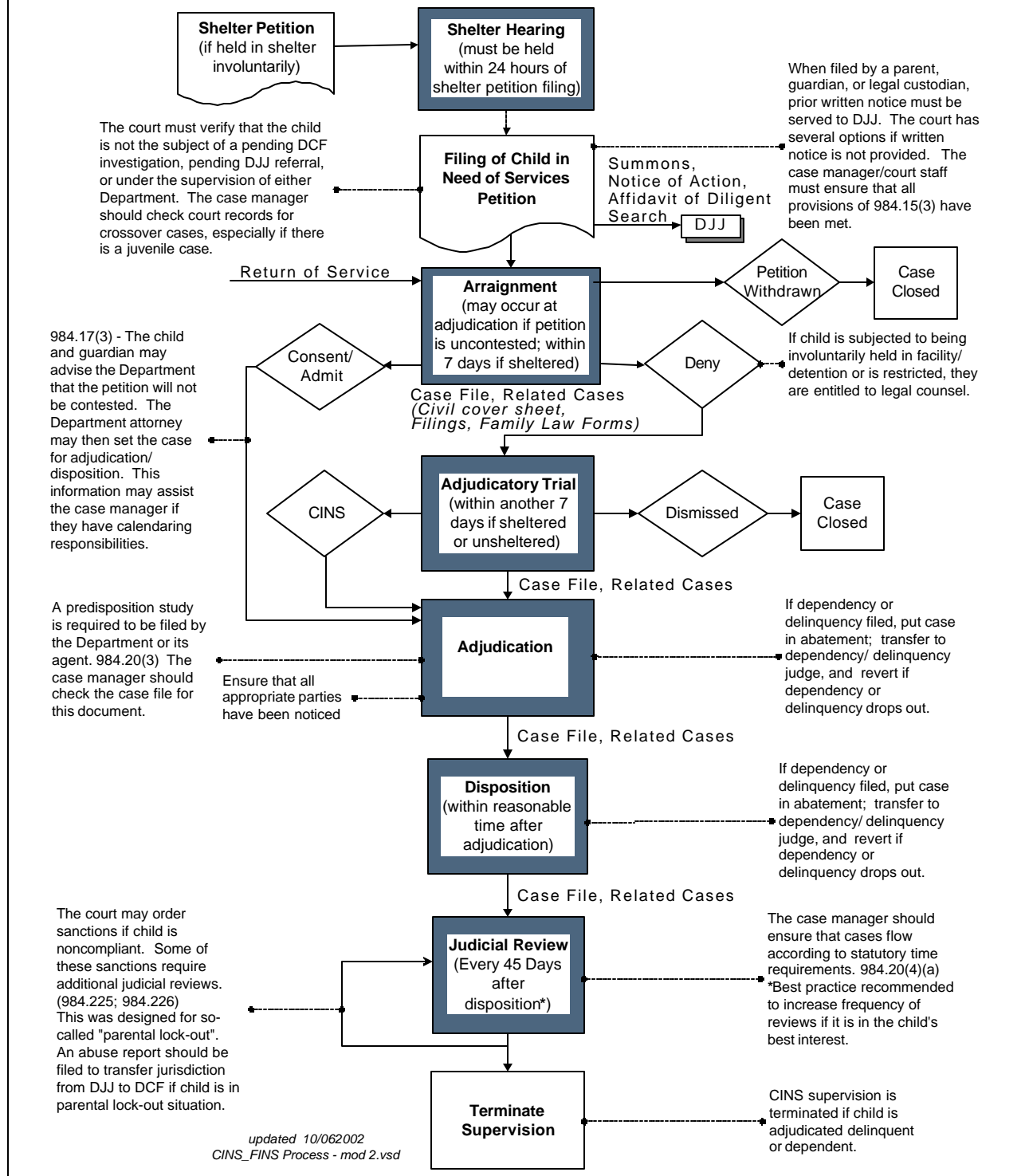


Figure A-32. Children/Families in Need of Services (CINS/FINS)