



Appendix A2

Functional Process Diagrams Juvenile Dependency and Delinquency Case Management



1.3 Juvenile Dependency Case Management Process

The Juvenile case management process is based primarily on the work accomplished by the Family Court Steering Committee’s Case Management Subcommittee regarding Juvenile Dependency and Juvenile Delinquency. The process flow diagrams are separated into two sections for Dependency and Delinquency. Included in this section are:

- ☞☞ Juvenile Dependency: Overview
 - ☞☞ Determine Custody/Shelter [2]
 - ☞☞ Arraignment & Pre-Disposition [4]
 - ☞☞ Conduct Disposition & Judicial Review [5]
 - ☞☞ Terminate Parental Rights [5.5]

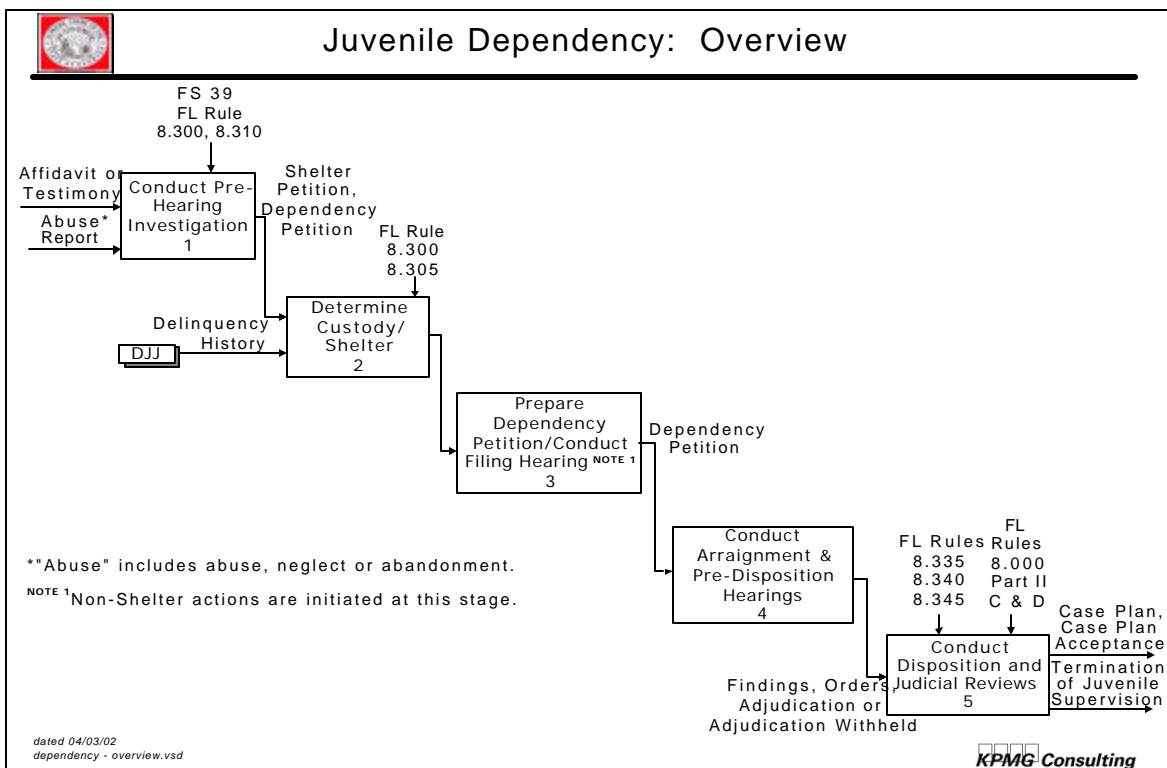


Figure A-15. Juvenile Dependency: Overview

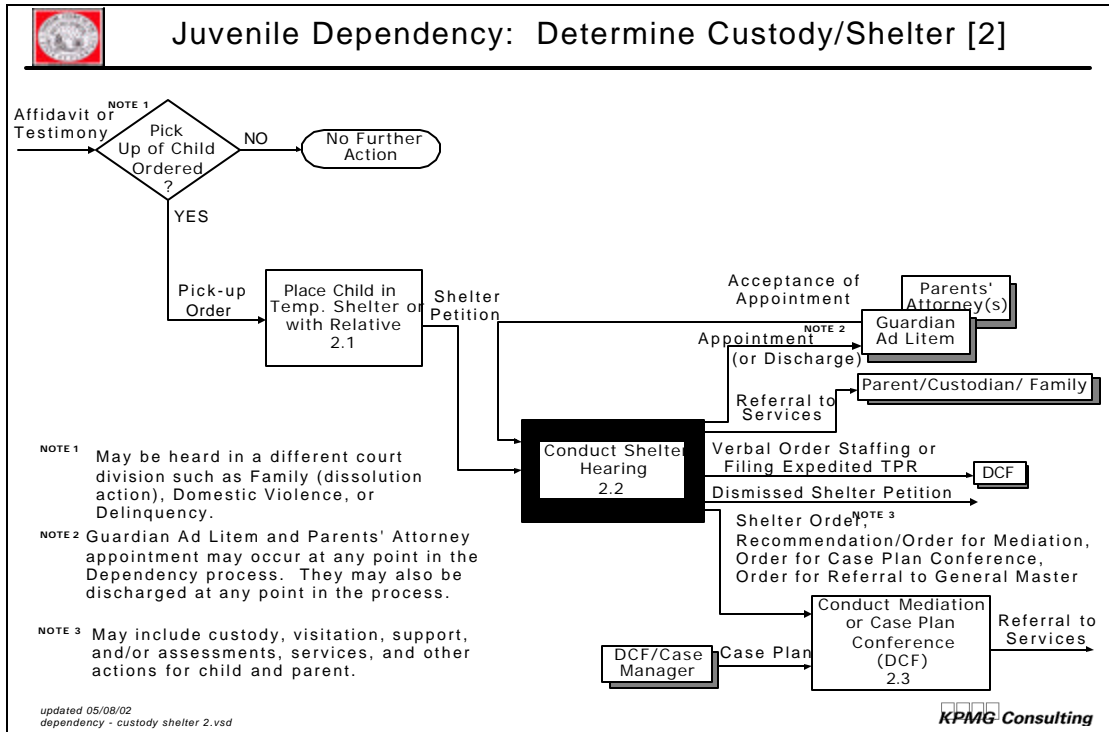


Figure A-16. Determine Custody/Shelter [2]

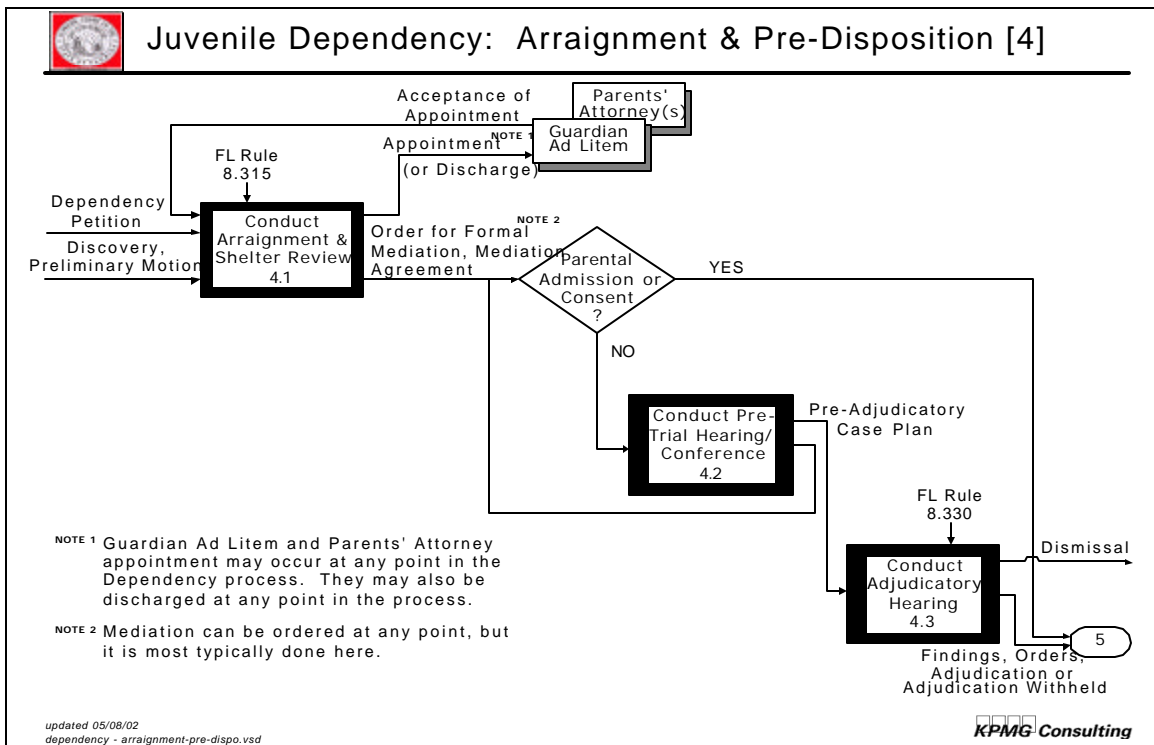


Figure A-17. Conduct Arraignment & Pre-Disposition [4]

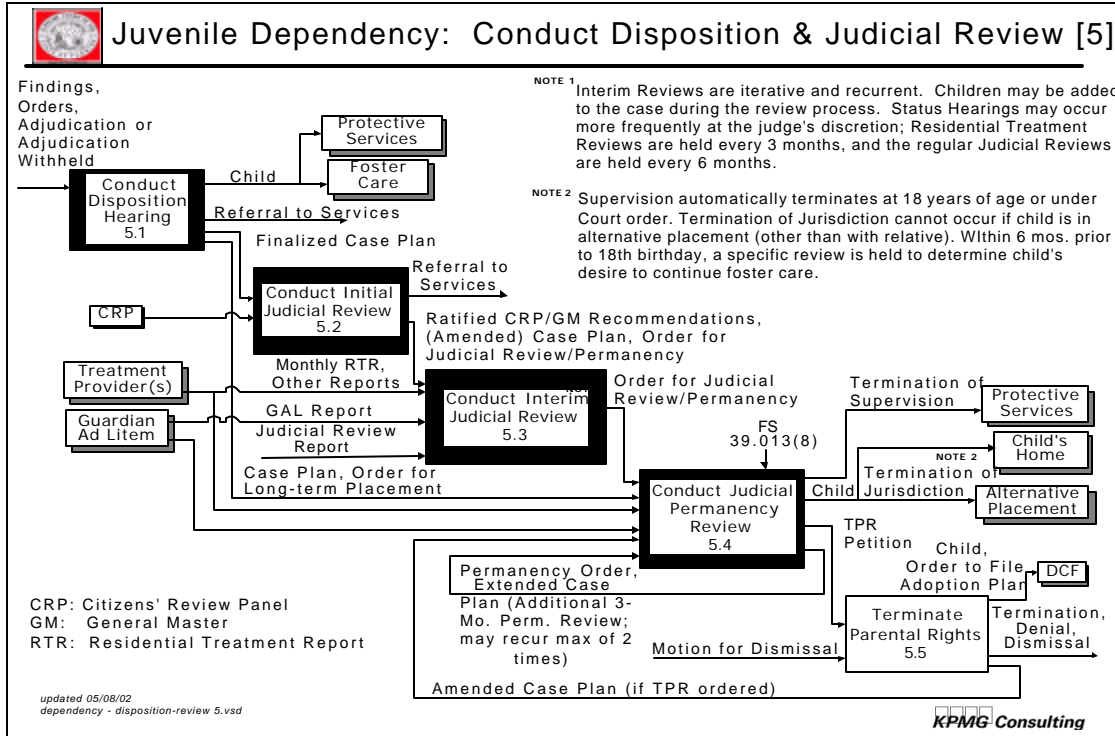


Figure A-18. Conduct Disposition & Judicial Review [5]

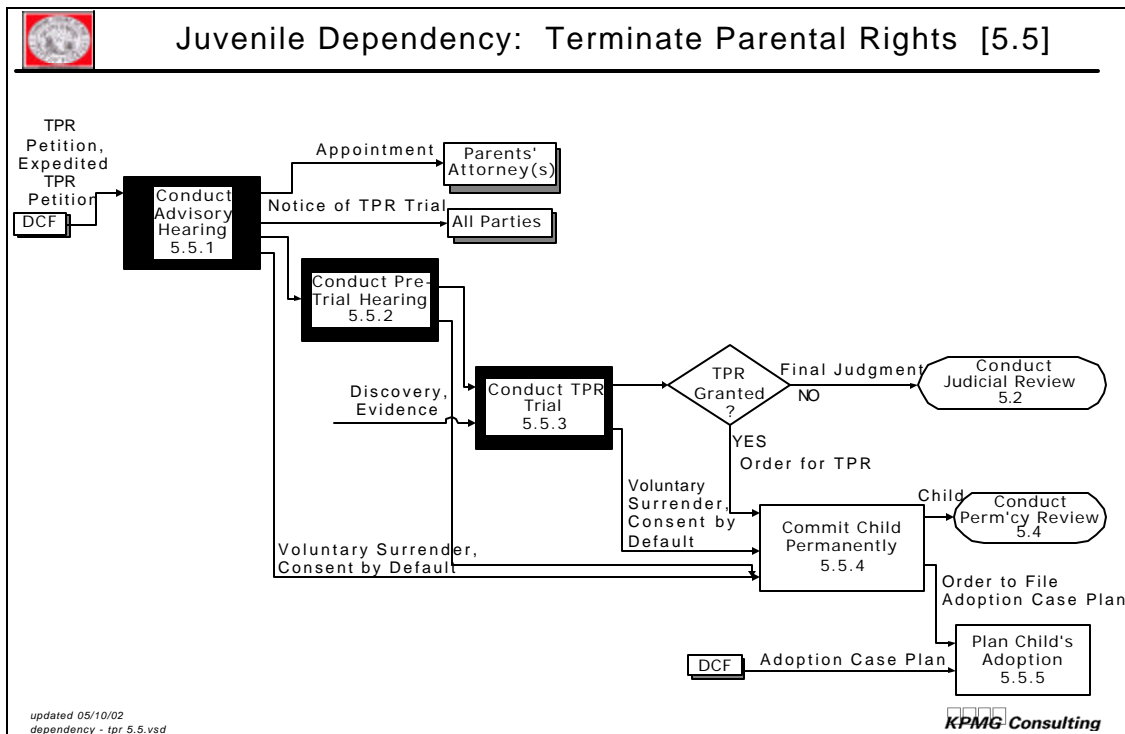


Figure A-19. Terminate Parental Rights [5.5]



1.4 Juvenile Delinquency Case Management Process

As described in the previous section, the Juvenile case management process is based primarily on the work accomplished by the Family Court Steering Committee’s Case Management Subcommittee regarding Juvenile Dependency and Juvenile Delinquency. The process flow diagrams are separated into two sections for Dependency and Delinquency. Included in this section are:

- Juvenile Delinquency: Overview
 - Determine Custody/Detention [2]
 - Manage Diversion/Pre-Trial Intervention [4]
 - Manage Regular Juvenile Case [5]

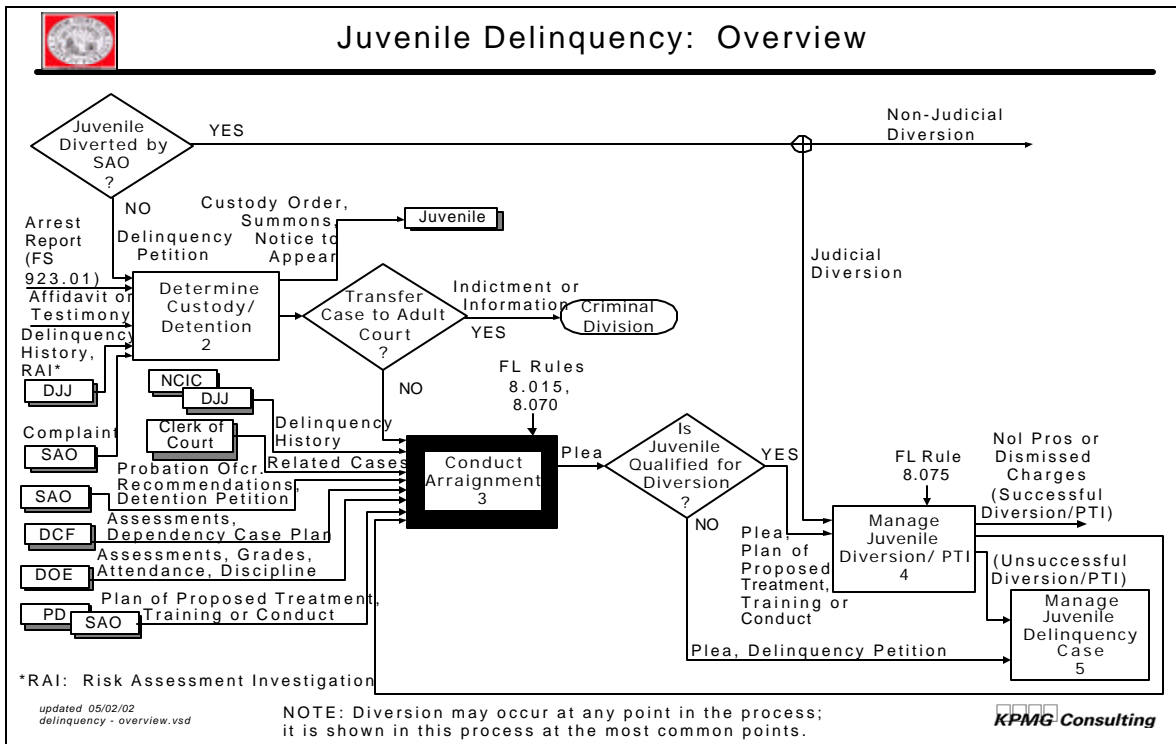


Figure A-20. Juvenile Delinquency: Overview

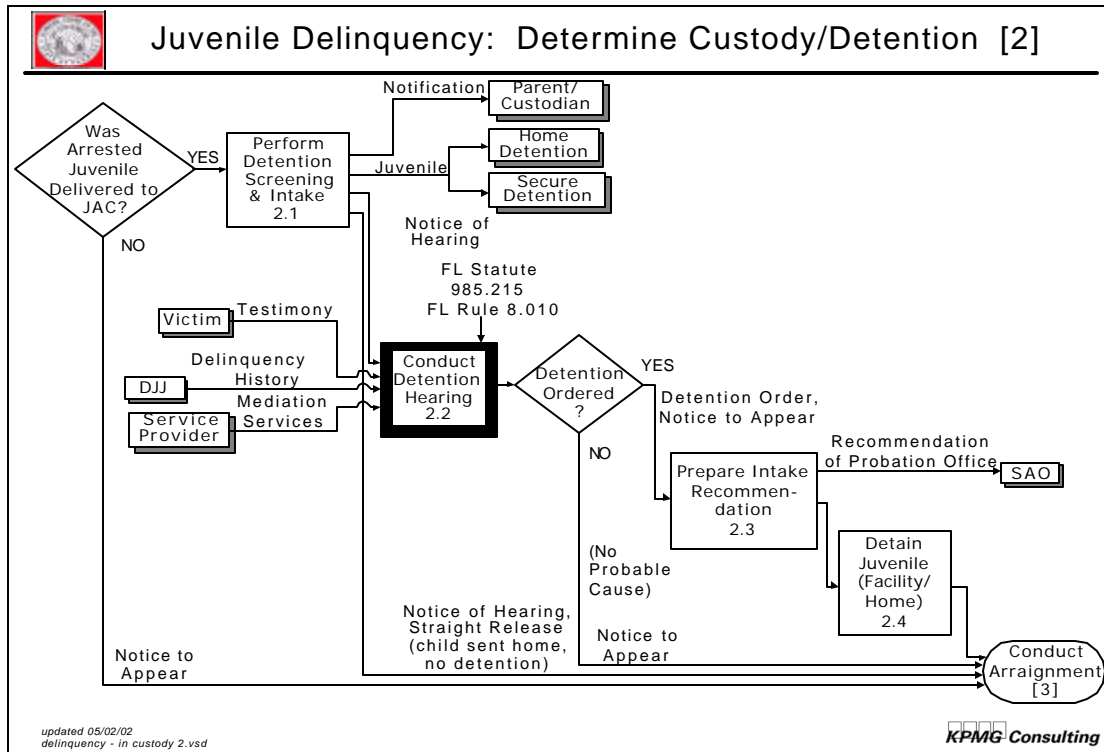


Figure A-21. Determine Custody/Detention [2]

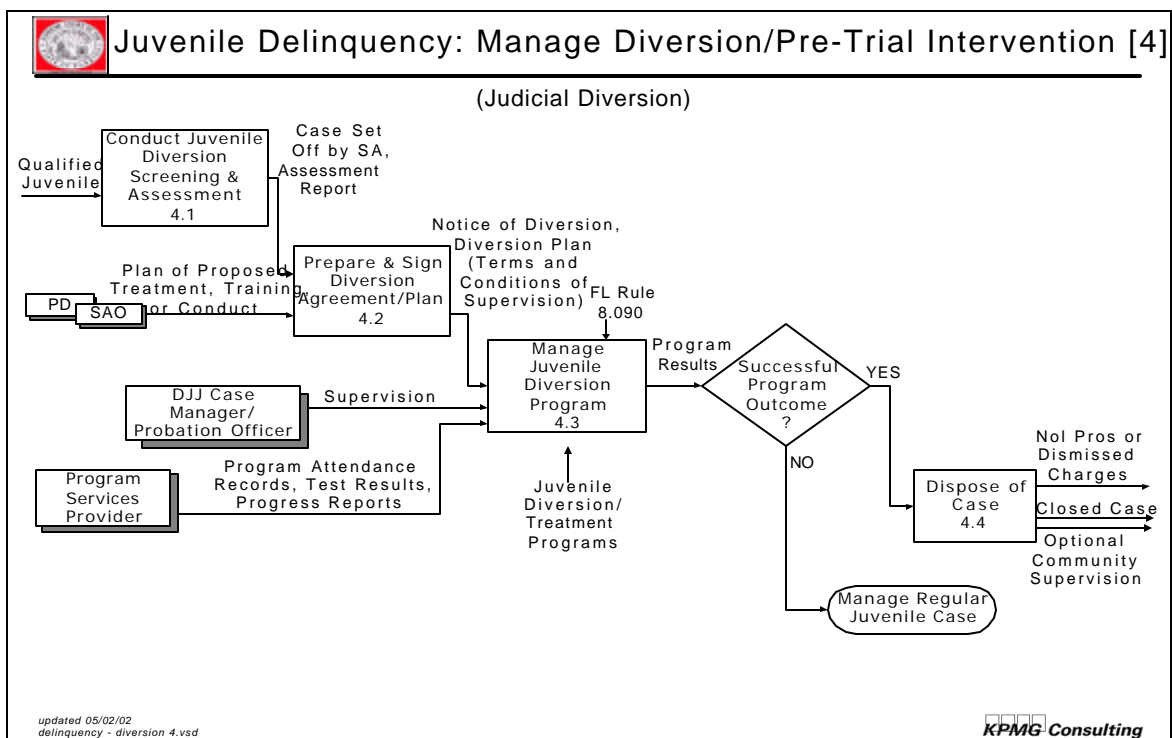


Figure A-22. Manage Diversion/Pre-Trial Intervention [4]

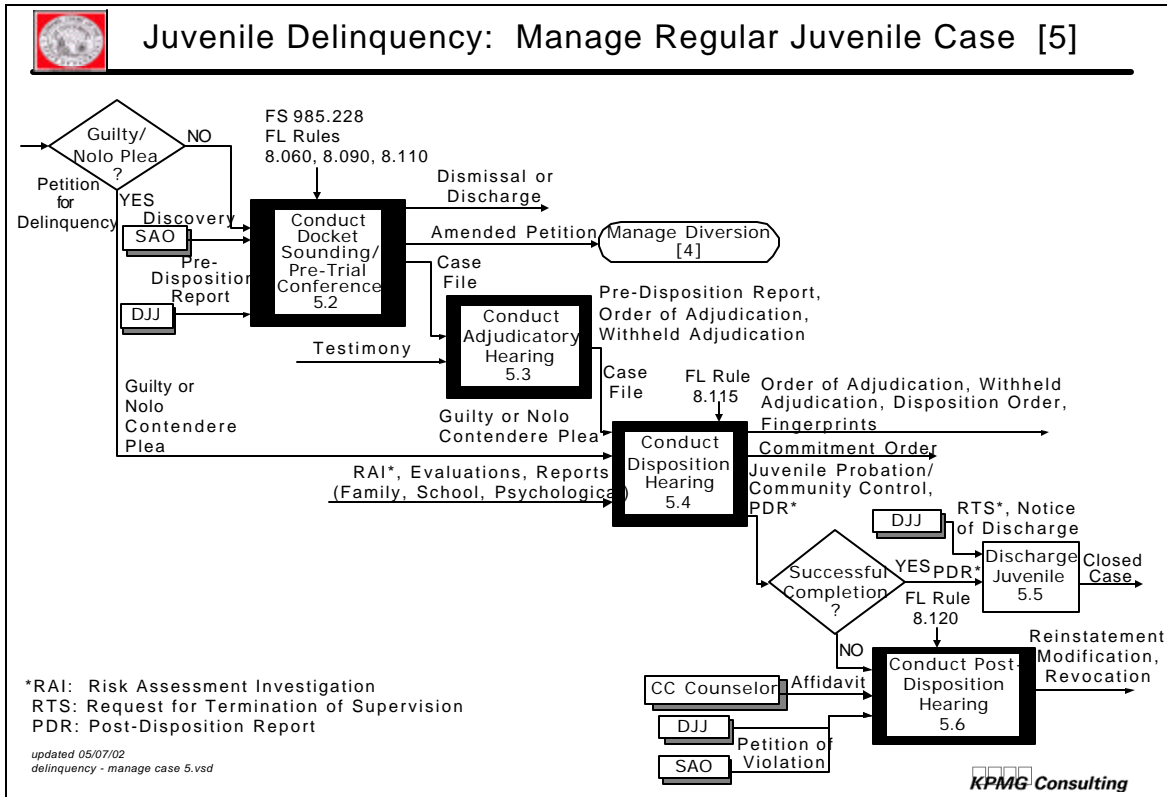


Figure A-23. Manage Regular Juvenile Case [5]