

IN THE SUPREME COURT OF FLORIDA

Case No. SC12-1

IN RE: JOINT RESOLUTION OF
LEGISLATIVE APPORTIONMENT

APPENDIX TO THE BRIEF OF THE FLORIDA SENATE

INDEX

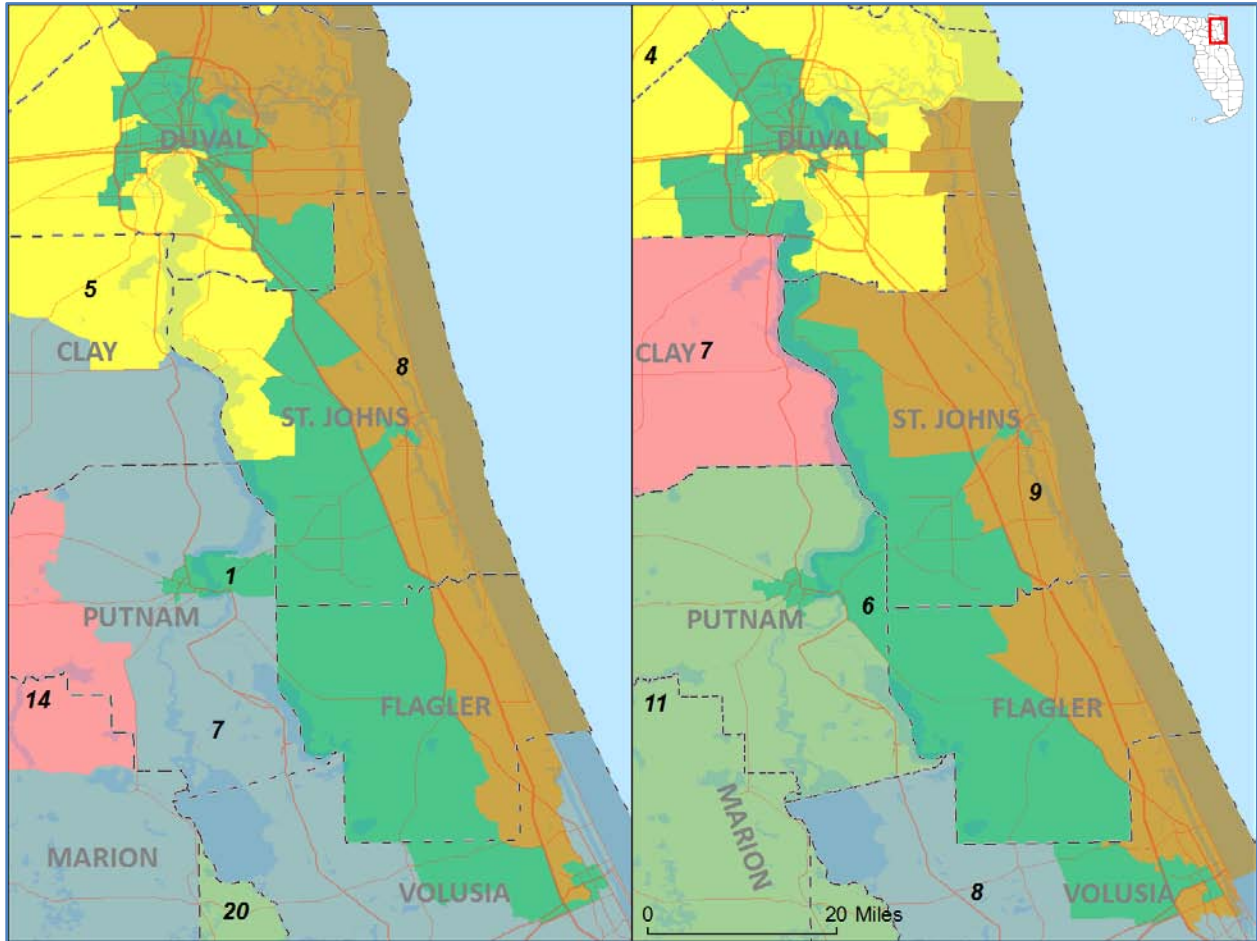
Northeast Florida African-American District A-2
Orlando-Area African-American District A-3
Tampa Bay African-American District..... A-4
Broward/Palm Beach African-American District..... A-5
Miami-Dade/Broward African-American District..... A-6
Hendry/Collier/Monroe/Miami-Dade African-American District A-7
Hialeah-Area Hispanic District..... A-8
Central Miami-Dade Hispanic District A-9
West Miami-Dade Hispanic District..... A-10

Note: Population numbers in this Appendix appear on page 922 (Benchmark Senate Districts) and page 890 (Newly Created Senate Districts) of the Attorney General’s Petition Appendix.

NORTHEAST FLORIDA AFRICAN-AMERICAN DISTRICT

Benchmark Senate District 1

Newly Created Senate District 6

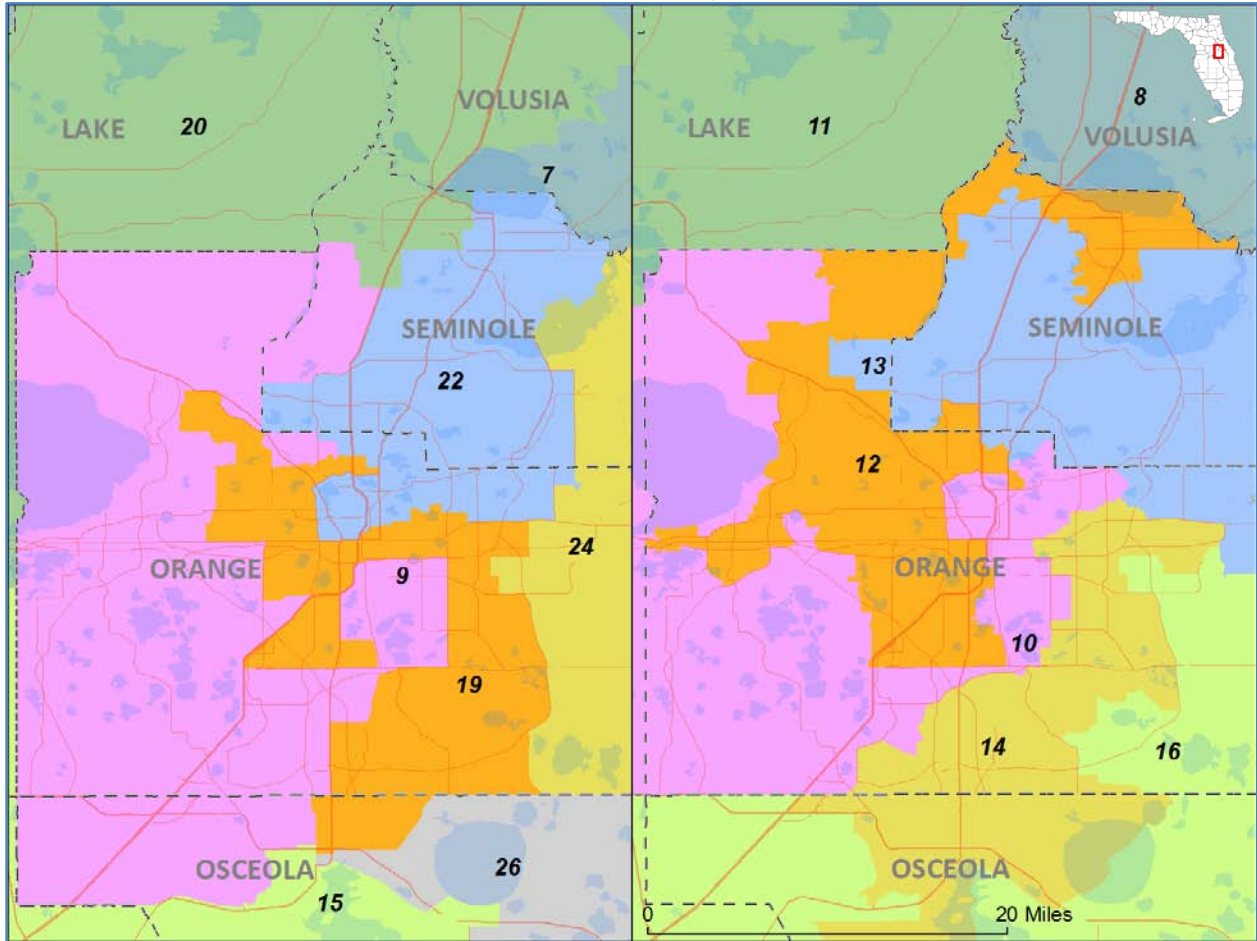


	Benchmark	Newly Created
Senate District	1	6
Total Population	424,456	465,476
Deviation	-45,577	-4,557
Deviation %	-9.7%	-1.0%
Black VAP	46.9%	47.7%
Hispanic VAP	6.1%	5.9%

ORLANDO-AREA AFRICAN-AMERICAN DISTRICT

Benchmark Senate District 19

Newly Created Senate District 12

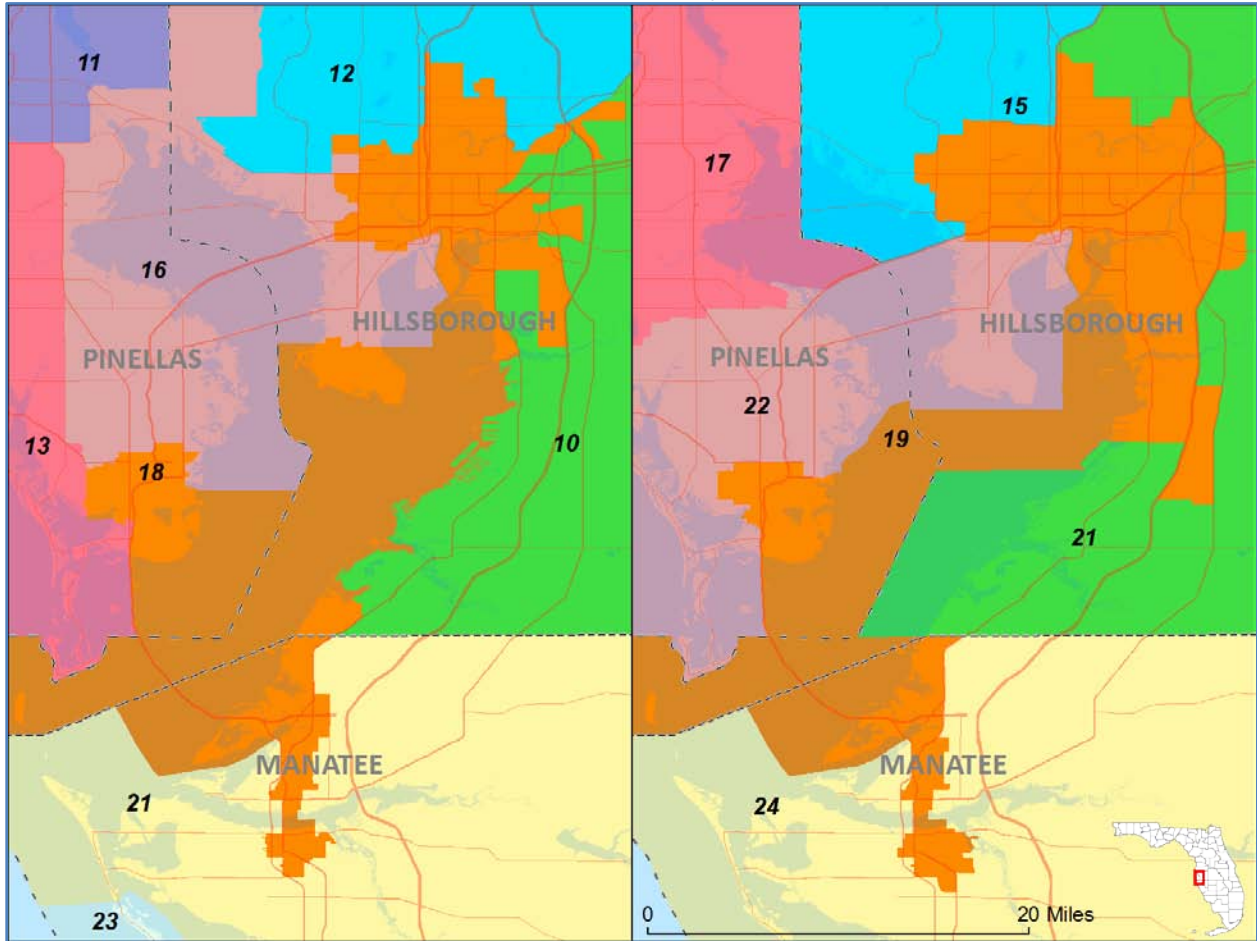


	Benchmark	Newly Created
Senate District	19	12
Total Population	477,068	465,764
Deviation	7,035	-4,269
Deviation %	1.5%	-0.9%
Black VAP	33.1%	40.0%
Hispanic VAP	35.5%	20.9%

TAMPA BAY AFRICAN-AMERICAN DISTRICT

Benchmark Senate District 18

Newly Created Senate District 19

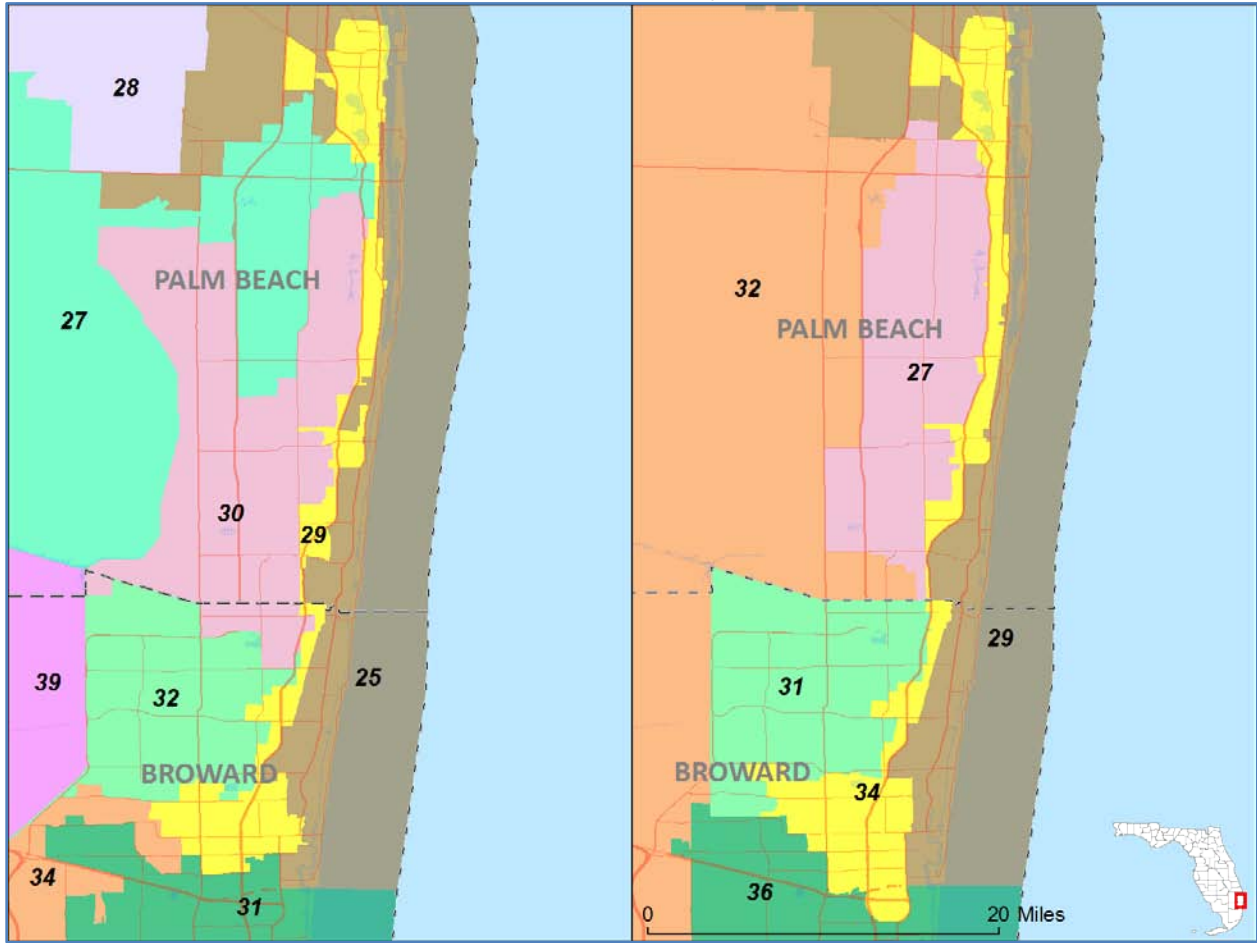


	Benchmark	Newly Created
Senate District	18	19
Total Population	404,822	467,143
Deviation	-65,211	-2,890
Deviation %	-13.9%	-0.6%
Black VAP	39.5%	37.2%
Hispanic VAP	23.3%	27.4%

BROWARD/PALM BEACH AFRICAN-AMERICAN DISTRICT

Benchmark Senate District 29

Newly Created Senate District 34

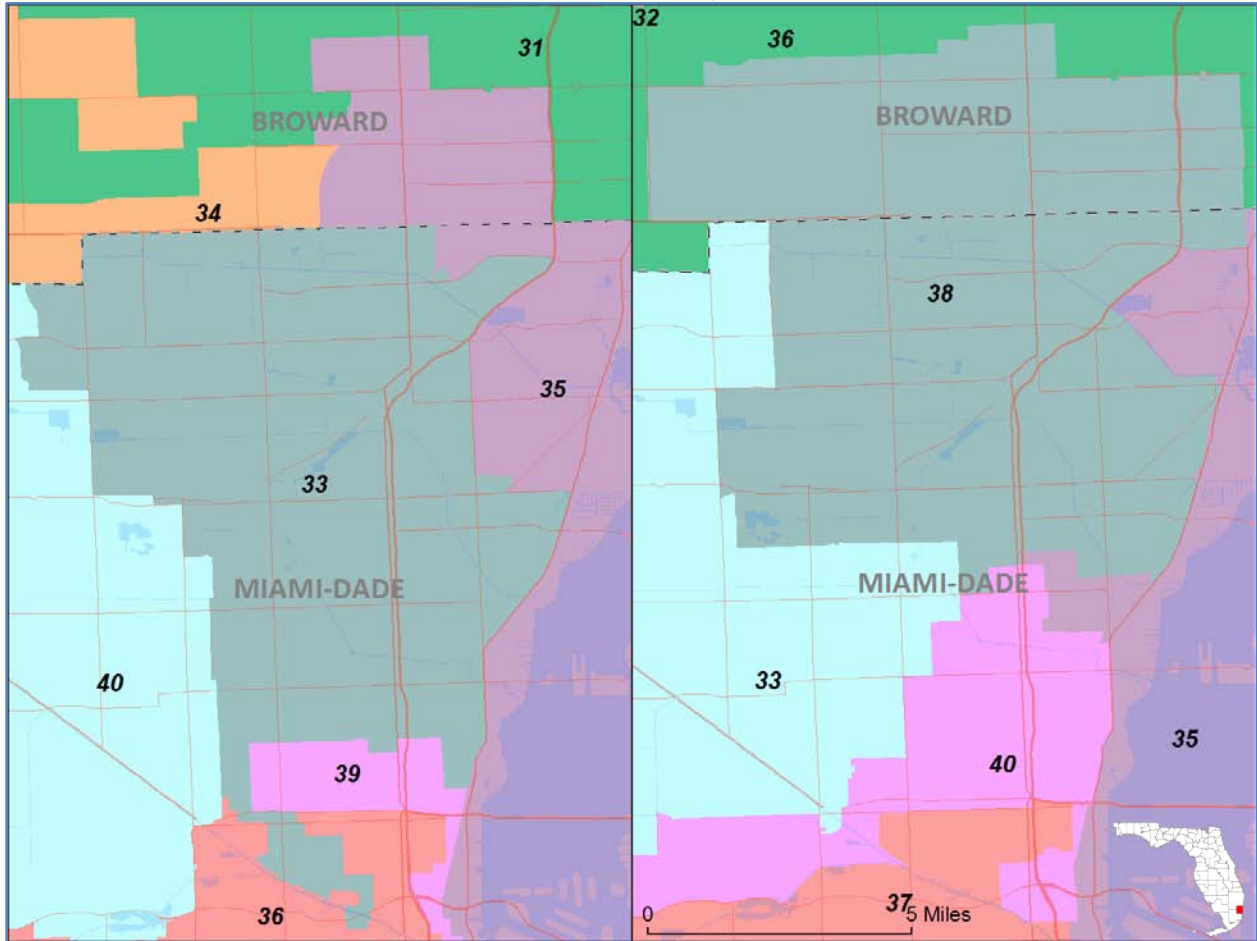


	Benchmark	Newly Created
Senate District	29	34
Total Population	397,144	473,003
Deviation	-72,889	2,970
Deviation %	-15.5%	0.6%
Black VAP	60.7%	55.8%
Hispanic VAP	13.8%	15.5%

MIAMI-DADE/BROWARD AFRICAN-AMERICAN DISTRICT

Benchmark Senate District 33

Newly Created Senate District 38

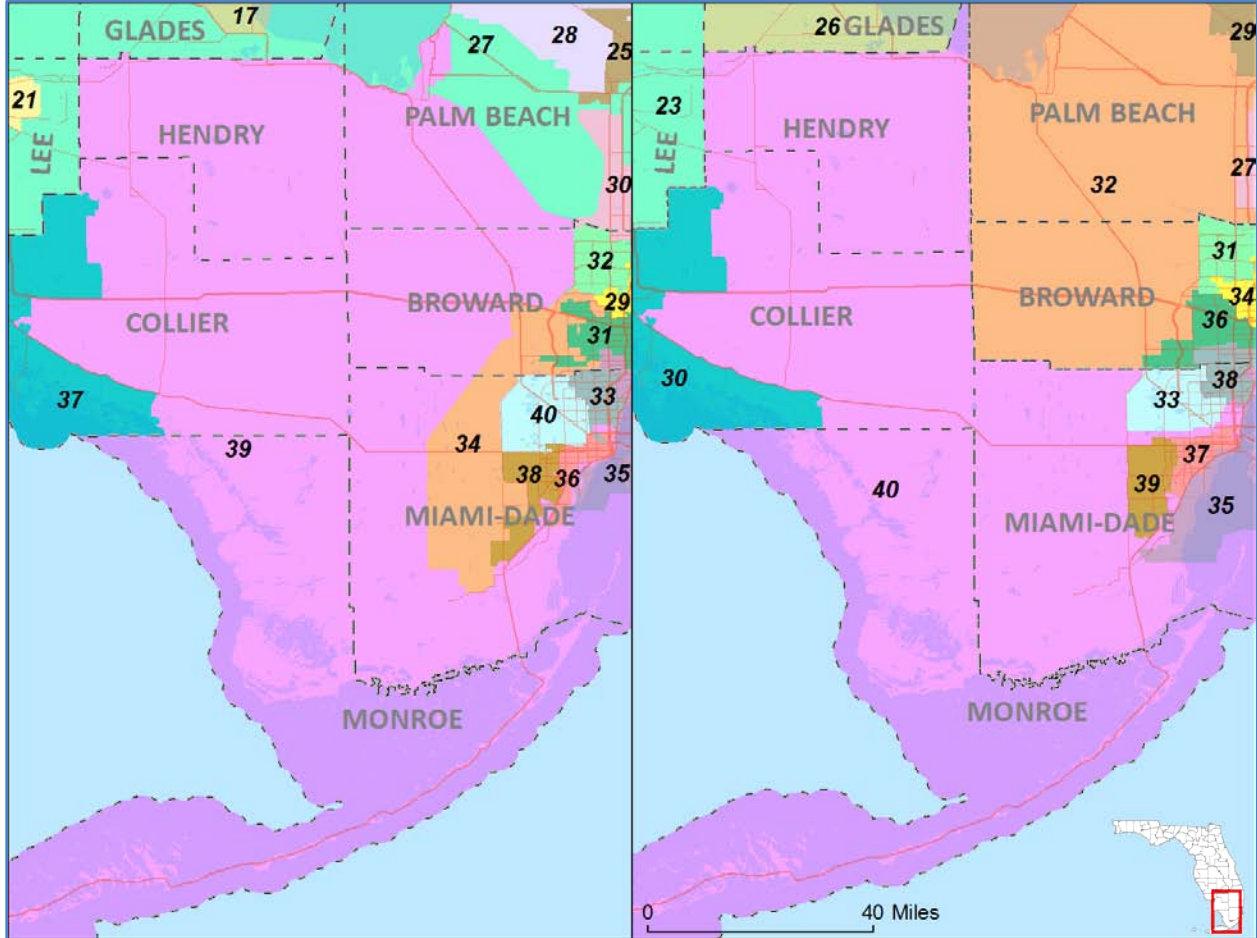


	Benchmark	Newly Created
Senate District	33	38
Total Population	404,290	471,595
Deviation	-65,743	1,562
Deviation %	-14.0%	0.3%
Black VAP	59.2%	58.3%
Hispanic VAP	36.7%	27.9%

HENDRY/COLLIER/MONROE/MIAMI-DADE AFRICAN-AMERICAN DISTRICT

Benchmark Senate District 39

Newly Created Senate District 40

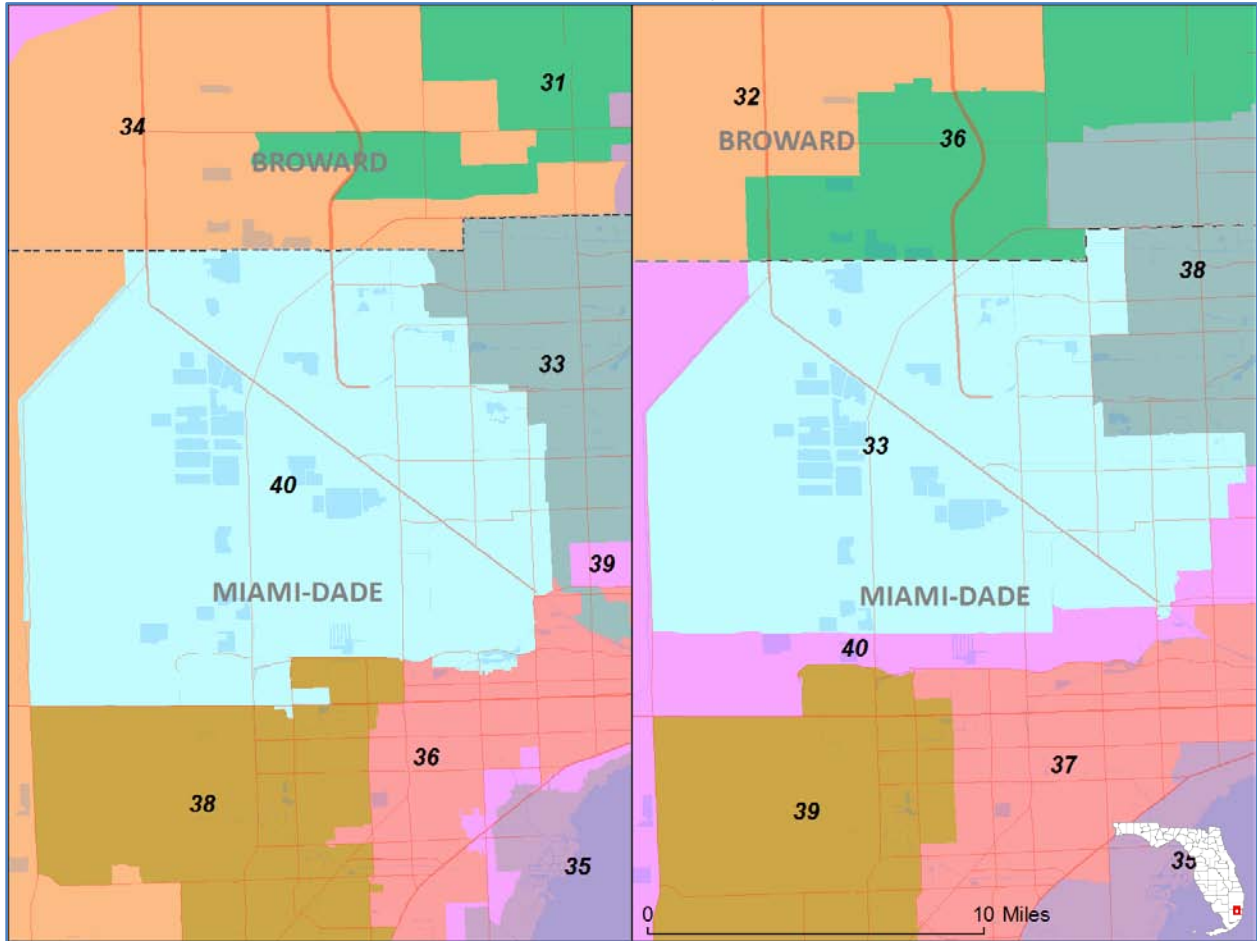


	Benchmark	Newly Created
Senate District	39	40
Total Population	483,183	474,566
Deviation	13,150	4,533
Deviation %	2.8%	1.0%
Black VAP	29.1%	35.1%
Hispanic VAP	43.0%	39.8%

HIALEAH-AREA HISPANIC DISTRICT

Benchmark Senate District 40

Newly Created Senate District 33

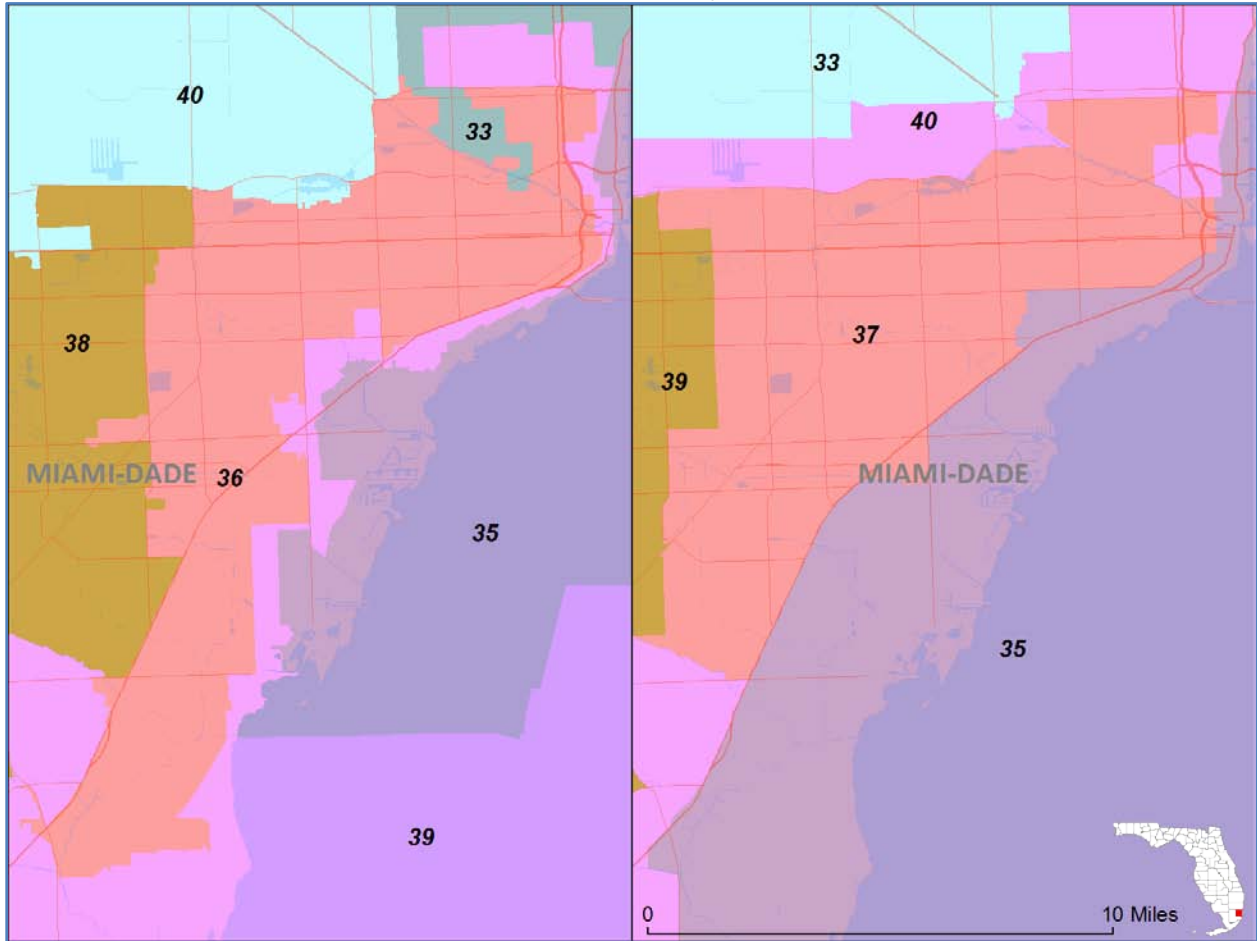


	Benchmark	Newly Created
Senate District	40	33
Total Population	448,543	467,132
Deviation	-21,490	-2,901
Deviation %	-4.6%	-0.6%
Black VAP	4.4%	8.3%
Hispanic VAP	90.5%	86.9%

CENTRAL MIAMI-DADE HISPANIC DISTRICT

Benchmark Senate District 36

Newly Created Senate District 37

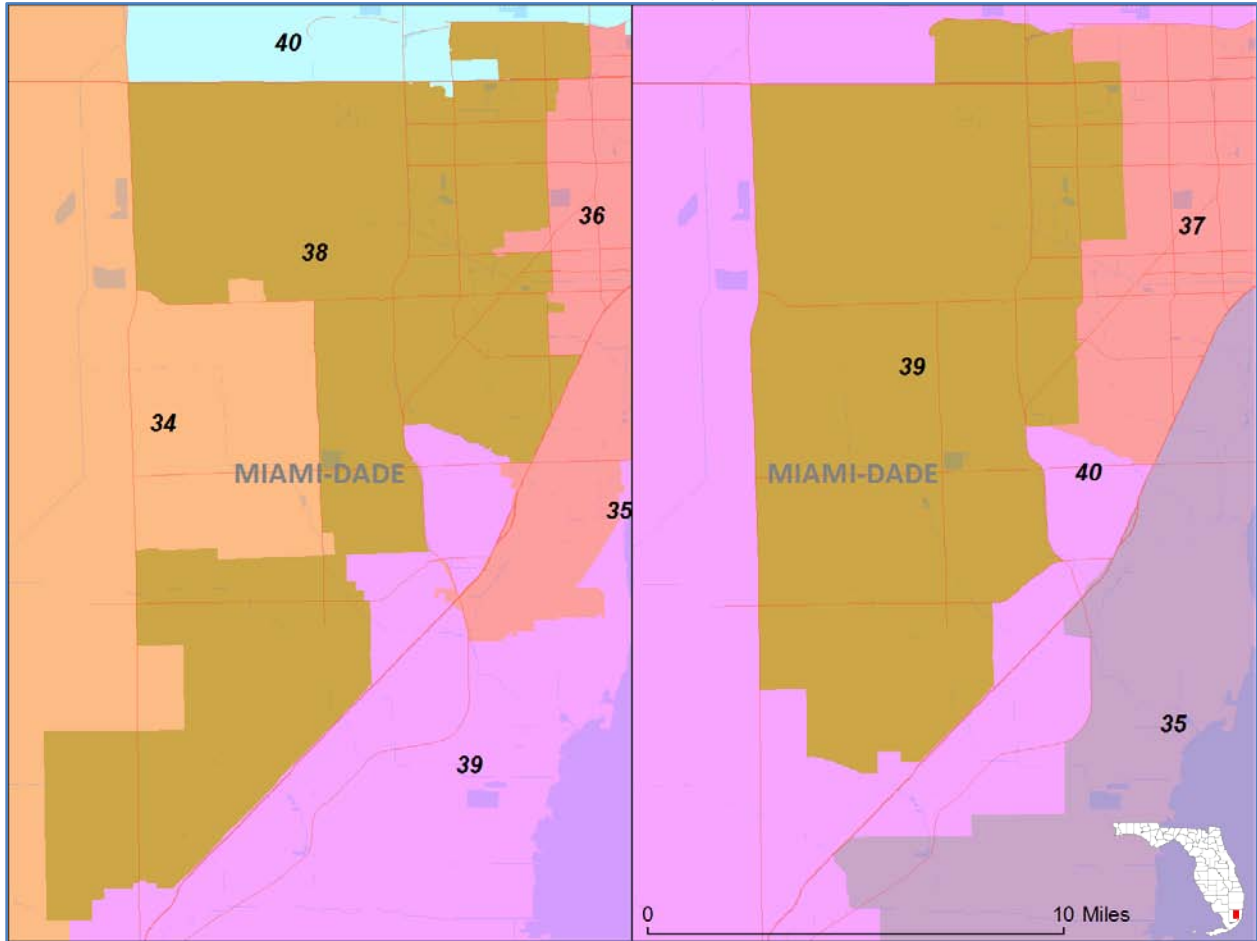


	Benchmark	Newly Created
Senate District	36	37
Total Population	418,626	474,673
Deviation	-51,407	4,640
Deviation %	-10.9%	1.0%
Black VAP	6.5%	5.4%
Hispanic VAP	79.2%	83.7%

WEST MIAMI-DADE HISPANIC DISTRICT

Benchmark Senate District 38

Newly Created Senate District 39



	Benchmark	Newly Created
Senate District	38	39
Total Population	442,810	474,333
Deviation	-27,223	4,300
Deviation %	-5.8%	0.9%
Black VAP	4.1%	5.2%
Hispanic VAP	81.9%	83.3%