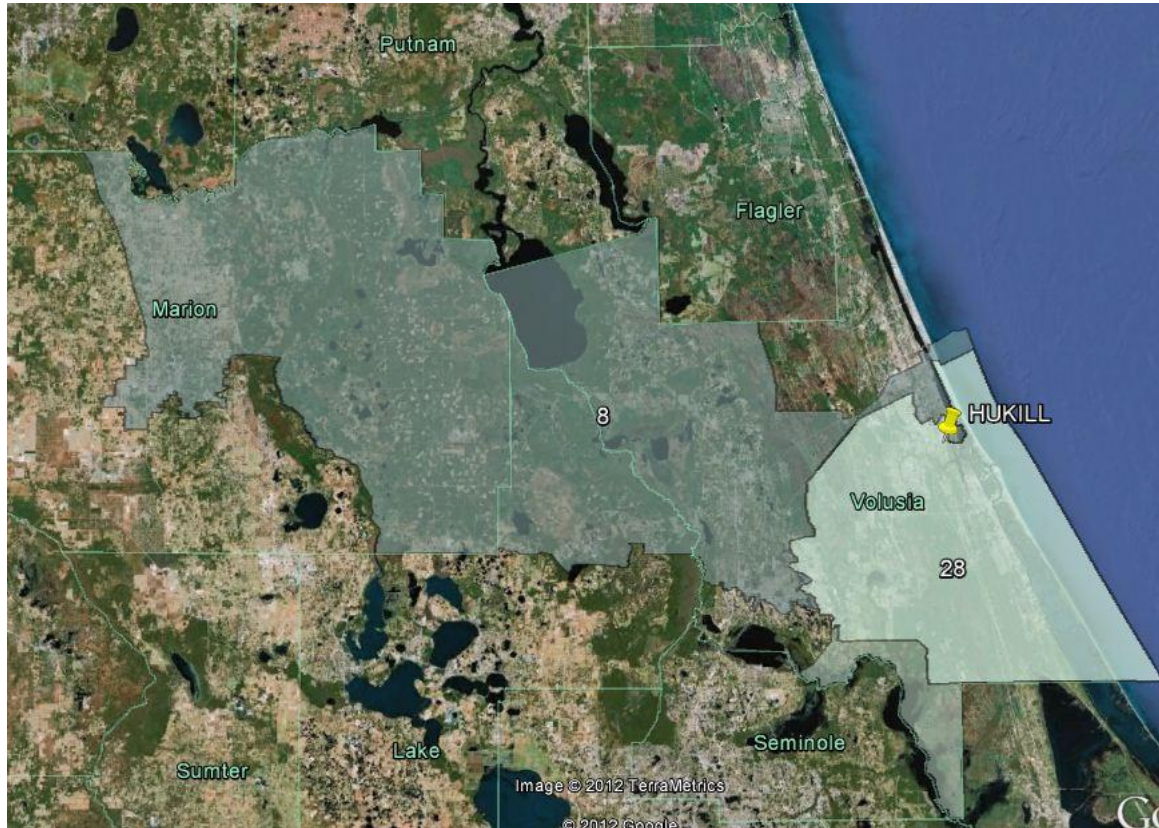




**HOUSE AND SENATE DISTRICTS  
OVERLAY REPORTS**

## SENATE DISTRICT 8



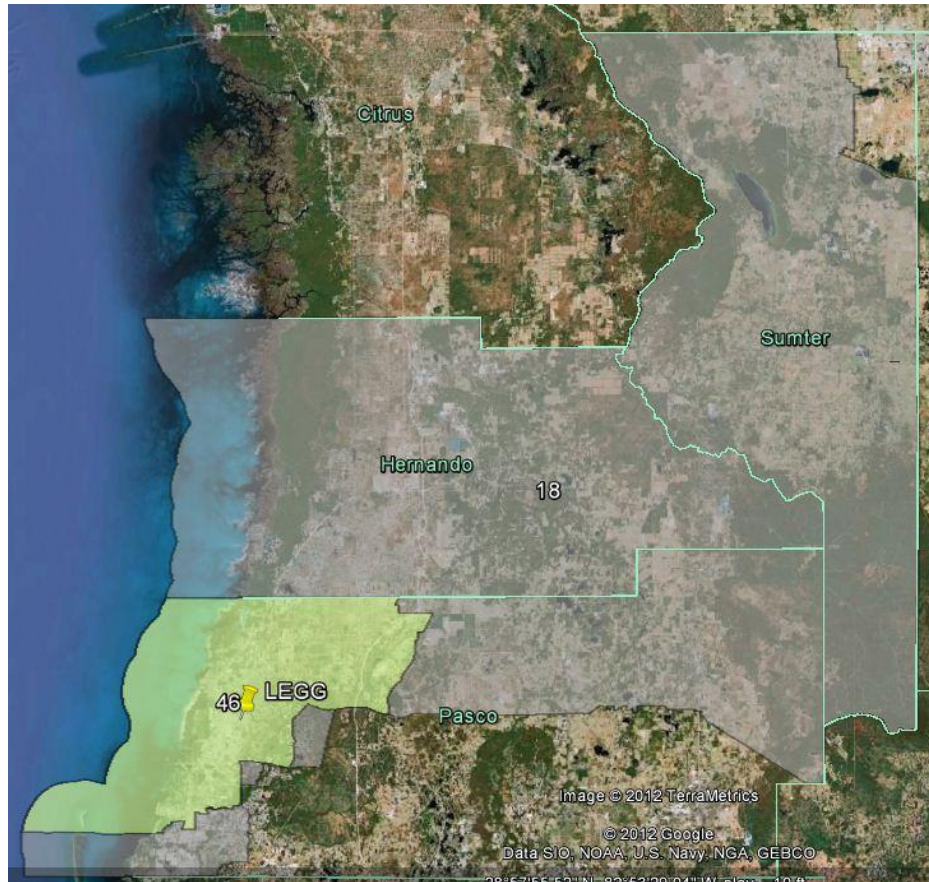
-  : Senate District 8 without any House District 28 area
-  : Senate District 8, overlaid with House District 28 area



## HOUSE DISTRICT 28



Senate District 8 is an open seat because Senator Evelyn Lynn is termed-out. It contains 98.39% of House District 28, currently represented by Representative Dorothy Hukill.

### SENATE DISTRICT 18



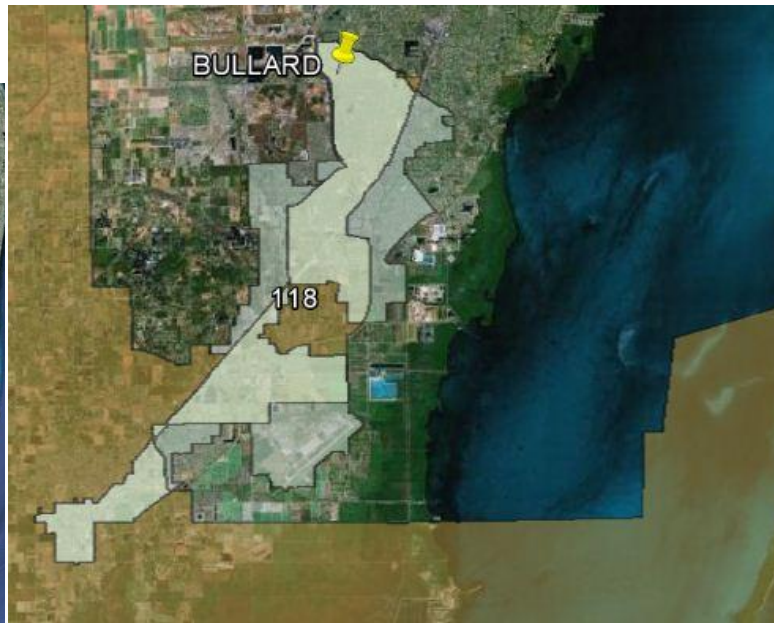
-  : Senate District 18 without any House District 46 area
-  : Senate District 18, overlaid with House District 46 area

### HOUSE DISTRICT 46






Senate District 18 is an open seat because Senator Mike Fasano is termed-out.  
It contains 100% of House District 46, currently represented by Representative John Legg.

### SENATE DISTRICT 39



### HOUSE DISTRICT 118



-  : Senate District 39 area without any House District 118 area
-  : House District 118 area without any Senate District 39 area
-  : House District 118, overlaid with Senate District 39 area

Senate District 39 is an open seat because Senator Larcenia Bullard is termed-out. It contains 72.70% of House District 118, currently represented by Representative Dwight Bullard.